

SILKYPIX® RAW Converter

Software Manual



© 2022-2023, Adwaa Co.,Ltd. All rights reserved.

Contents

1. Startup	1
1.1. Installation and Execution	1
1.2. Trial and Registration of Product Key	1
1.2.1. Beginning Trial	1
1.2.2. How to Register Product Key	2
1.2.3. Product Key Registration Cancellation	3
1.2.4. Inquiries Regarding Product Key Registration	4
2. Operation flow and screen configuration	5
2.1. Operation flow	5
2.2. Names and basic functions of each part of the screen	6
2.3. Menu bar	6
2.3.1. File	6
2.3.2. Help	7
3. Convert RAW data	8
3.1. Open RAW data	8
3.2. Conversion settings	8
3.2.1. Output format	8
3.2.2. Applied parameters	10
3.2.3. Options	10
3.2.4. Destination folder	11
3.2.5. Output filename	12
3.2.6. Initialize	13
3.3. Convert	13
4. User support	15
4.1. Inquiries about merchandise	15
4.1.1. How to make inquiries	15
4.1.2. How to check serial number	16
5. License Agreement	17

- Please acknowledge that the contents and price of the specific software and manual of this product will change without notice.
- The specifications and the screen shots that have been described in this manual might be different from the product version.
- This manual has been copyrighted. It is prohibited to reproduce, reprint any of the materials and product without obtaining permission from Adwaa Co., Ltd.
- The manufacturers, the cameras, and the software names that have been described in this manual are the trademarks or registered trademarks of each company.
- SILKYPIX®; It is a registered trademark of Adwaa Co., Ltd.
- The re-distribution module that Microsoft Corporation owns the copyright is included.

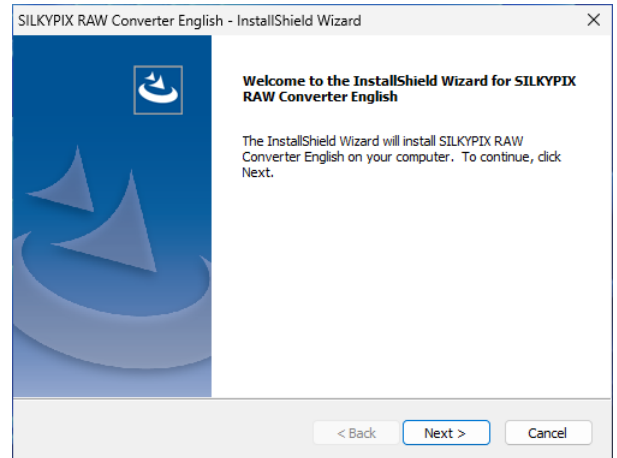
1. Startup

1.1. Installation and Execution

When you execute the downloaded set-up program, installation of "SILKYPIX RAW Converter" starts.

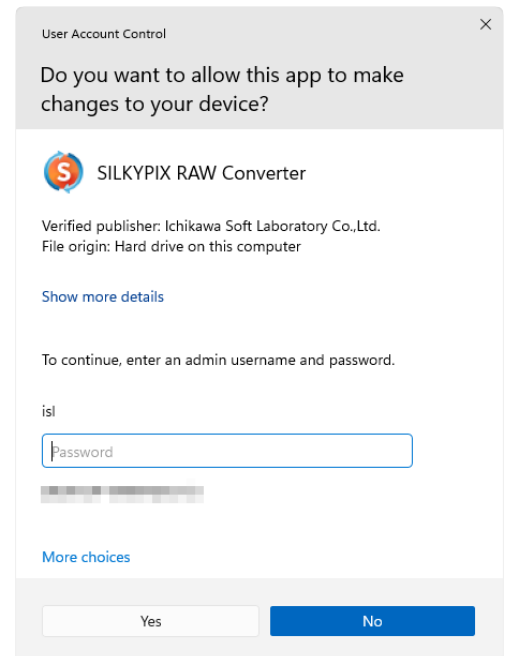
"SILKYPIX RAW Converter" icon is created on the desktop after the installation is complete.

Double-click the above icon on your desktop to execute "SILKYPIX RAW Converter".



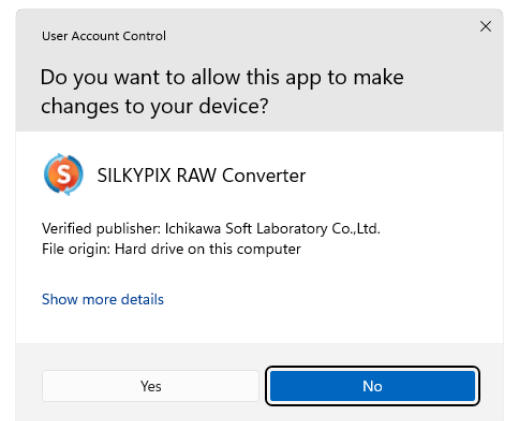
When installing or running "SILKYPIX RAW Converter" for the first time, process as the administrator in order to record administrator information on the PC you are using. Your admin permissions become necessary to continue. Please continue processing at the "User Account Control" dialog.

If your account is a "Standard user", please enter the password of the administrator account and then click [Yes] button.



If your account is an "Administrator", please click [Yes] button.

During the first time start-up process, SILKYPIX RAW Converter operates as an administrator. After the completion of this process, SILKYPIX RAW Converter operates as a standard user.



1.2. Trial and Registration of Product Key

1.2.1. Beginning Trial

You can test the full function of SILKYPIX RAW Converter and check the development quality before purchasing the software during the trial period.

When starting-up SILKYPIX RAW Converter at first time, the "Registration" dialog is displayed. Click [Begin trial] to start

trial.

You can use SILKYPIX RAW Converter during only trial period without the license. Please purchase the license to continue to use SILKYPIX RAW Converter.

When installing or running "SILKYPIX RAW Converter" for the first time, process as the administrator in order to record administrator information on the PC you are using.

If your account is a "Standard user", please enter the password of the administrator account and then click [Yes] button.

If your account is "Administrator", please click [Yes] button.

Processing is performed as the administrator the first time the program is run, but after this process is complete, it runs as a standard user.

Registration (SILKYPIX RAW Converter English)

Thank you for using SILKYPIX RAW Converter.

[Use the Trial Version]
Click [Begin trial] and you can use all features for 14 days.

[Use the Product Version]
Enter [Serial number] and [Product key] and click [Register product key].

Note: The number of characters used for the "Product key" differs depending on the type of product license. Consequently, some blank space may be left in the field.

Serial number - -

Product key - - - - -

Begin trial

Exit

Register product key

1.2.2. How to Register Product Key

When you register the product key on your PC once, you will be able to fully use "SILKYPIX RAW Converter".

You need to be connected to the server via the internet to register your product key. You can automatically register your product key by connecting to the server via the Internet.

The number of PCs that can be registered with one product key differs depending on the type of product key.

Furthermore, if you have to reregister due to some kind of damage, you can reregister as is if it is on the same PC.

After performing product key registration on the PC you use, if you change the PC you use this software on, such as when buying a new PC, you can transfer the license to the other PC by performing "Clear Product key registration" from the registered PC.

One product key can be registered on up to three computers. Please purchase additional licenses if you will use this on four or more computers.

Please enter your "Serial Number" and "Product Key" and then click [Register product key] button on the "Registration" dialog.

Your "Product Key" and "Serial Number" are sent to our server via Internet for a registration. Please confirm your network connection during the registration. If the registration is not completed by some troubles or the network is disconnected during the registration, you cannot use SILKYPIX RAW Converter until the registration is completed. (Please understand that you are responsible for any charges for the Internet connection during the registration.)

After completing the registration, you do not need to enter your product key in next execution.

* Internet connection is required only for online registration. You do not need Internet connection for operation of SILKYPIX RAW Converter.

[Error during online registration]

Sometimes one may face an error during online registration in spite of an Internet connection working correctly. Many of the problems may be caused by your network, security software or proxy/firewall settings. We may not be able to support you with your security software or network setting. It is your responsibility to ensure that SILKYPIX RAW Converter can connect to our server via Internet.

[When reregistering is required]

If product key registration information has been lost because there was some problem with the PC that the product key was registered on and you had to reinstalled your OS, it will be necessary to register the product key again.

If reregistering to the same PC, please re-register using the same procedures for new registrations. A product key and a serial number are required for reregistering. In principle, we will not reissue your license, so please take care so that it will not be lost.

[If you want to transfer to another PC]

Transfers to other PCs can be done automatically by performing "Clear Product key registration".

1.2.3. Product Key Registration Cancellation

These are the procedures for automatic performing a transfer to the PC on which you use this software, such as with the purchase of a PC. The transfer of licenses can be performed automatically over the Internet.

You will perform "Clear Product key registration" on the PC on which you performed product key registration, and then perform "Product Key Registration" on another (one) PC to which you wish to transfer.

One important matter to note is that you will not be able to reregister the same product key to a PC on which you have performed "Clear Product key registration". Please be aware that this method cannot be used to alternate between two PCs.

[Procedures for Product Key Registration Cancellation]

- (1) Start the software on the PC on which you will perform registration cancellation.
- (2) Select "Clear Product key registration" from the "Help" menu.

If the "Clear Product key registration" menu item is not available, you cannot perform "Clear Product key registration" on your PC.

The "User Account Control" dialog will appear and ask if you will continue. Continue by using one of the following methods.

If your account is for a standard user (if not an administrator), enter the administrator's account password and click on the [Yes] button.

If your account is as the administrator, click [Yes]. This process requires "Administrator Authority".

- (3) Click the "OK" button when the "Clear Product key registration" dialog appears.
- (4) "Registration is initialized." Click the "OK" button when this message appears.
- (5) SILKYPIX RAW Converter will end. This completes the procedures through "Clear Product key registration".
- (6) Start SILKYPIX RAW Converter on the new PC on which you will use the software and perform product key registration.

1.2.4. Inquiries Regarding Product Key Registration

This software offers a method so that customers can automatically perform product key registration, reregistering, and transfers to other PCs over the Internet on their own. Before contacting our company, we ask that you confirm whether or not you can solve your problem by utilizing these methods.

A method for solving your problem may be listed in the information on our company's web page (<https://silkypix.isl.co.jp/en/>).

Please utilize user support's "FAQ (Frequently Asked Questions)".

If you still cannot solve the problem on your own, please e-mail (silkypix_support_english@adwaa.co.jp) our company's support desk.

When doing so, please give as many details of the problem as possible and check that you have not left out any required items.

[Required items to include when e-mailing]

Software name: "SILKYPIX RAW Converter"

Software serial number

Your name

Phone number

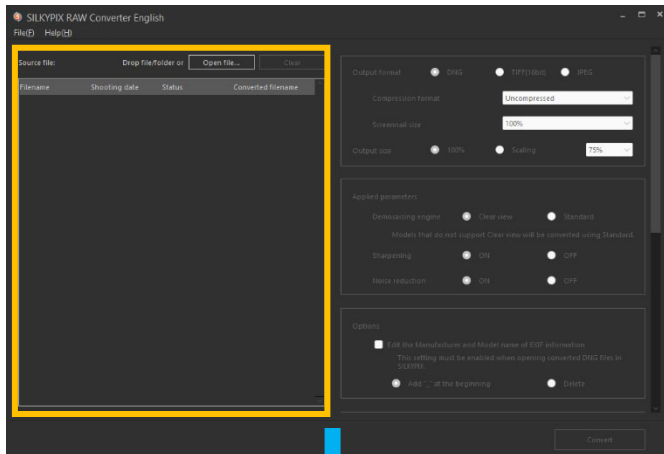
Return e-mail address

Description of the problem (as detailed as possible)

2. Operation flow and screen configuration

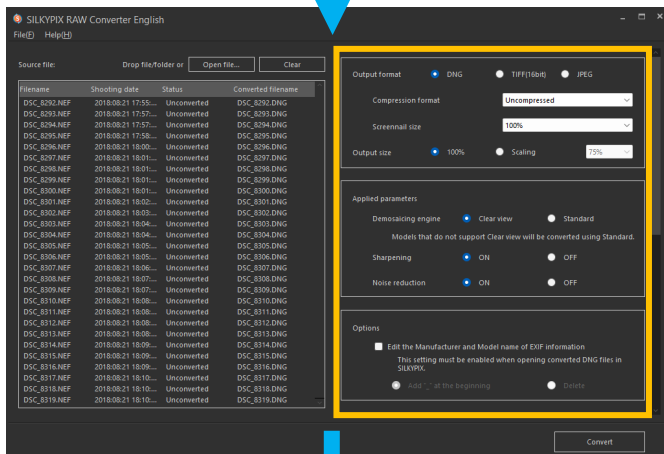
2.1. Operation flow

SILKYPIX RAW Converter is software that converts your RAW data into high-quality RAW (DNG) data for output. By using the latest SILKYPIX image processing engine to perform the conversion, you can use other manufacturers' image editing software or older SILKYPIX products to adjust images using high-resolution, high-quality RAW data.



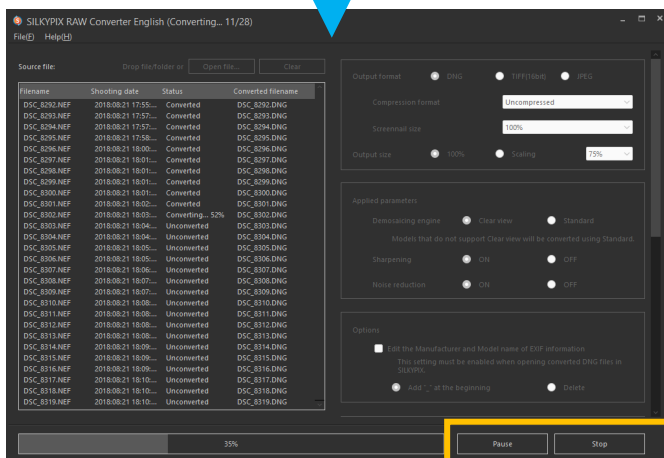
A. Open images

Register the RAW data files you wish to convert by dragging them to the list on the left side of the window.



B. Setup

The settings panel on the right side of the window allows you to set the Output format, Destination folder, etc.

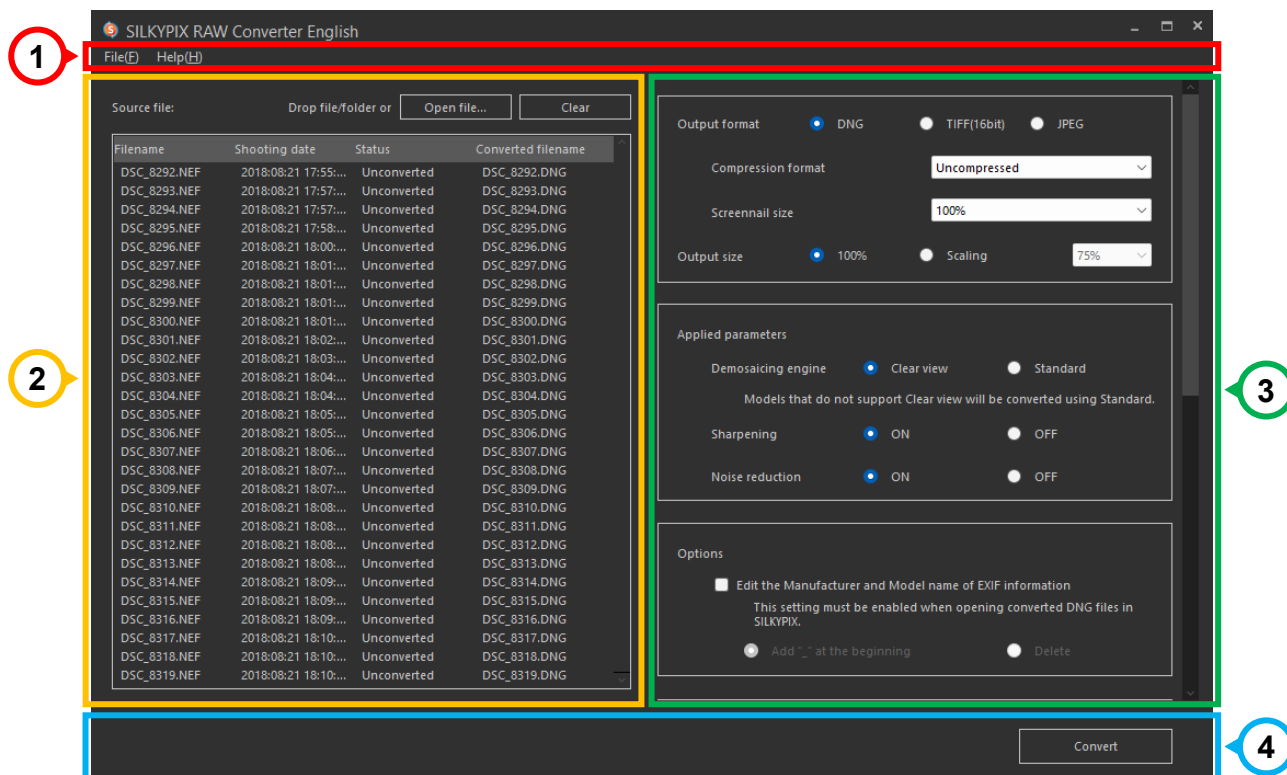


C. Convert

Click the [Convert] button at the bottom right of the window to start the conversion.

After conversion is complete, open the output DNG data with other image editing software to make image adjustments.

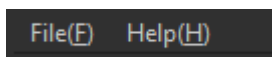
2.2. Names and basic functions of each part of the screen



	Name	Overview
1	Menu bar	Execute the function from the menu
2	Source file list	Register the RAW data to be converted in this list.
3	Settings	Configure various settings related to conversion.
4	Status bar	Press the [Convert] button to execute the conversion. It also displays the progress of the conversion.

2.3. Menu bar

Select a function to execute in each menu.



2.3.1. File

Menu items related to files are found here.

Name	Overview
Open file	Open RAW data to be converted as single files.
Convert	Execute the conversion.
Stop	Stop the conversion.
Exit	Close SILYKPIX RAW Converter.

2.3.2. Help

Items related to license registration and software information are summarized.

Name	Overview
Open software manual	Display this manual.
Visit SILKYPIX WEB site	Display SILKYPIX website.
Registration	Start product key registration.
Clear product key registration	Clear product key registration.
Troubleshooting	<p>This is a function for overcoming troubles by following instructions and operations from our company's support desk.</p> <ul style="list-style-type: none">● Initialize user configuration files Initialize SILKYPIX RAW Converter user configuration files.● Delete temporary files Delete the temporary files created by SILKYPIX RAW Converter for preview, thumbnail display, etc.● Product key registration test Perform a test to see if it is possible to do an on-line registration of the product key.
Version information	Display SILKYPIX RAW Converter version information and customer's license information.
System information	Display SILKYPIX RAW Converter settings and PC information. At the time of user support, we may ask you to provide this information.
Check for software updates	Check for any new version of the program.

3. Convert RAW data

Open RAW data, convert to RAW(DNG)/JPEG/TIFF image and save.

3.1. Open RAW data

Open the RAW data to be converted and register it in the source file list.

Drop a file or folder from Explorer to register it in the list. Alternatively, select the RAW data using the [Open file] button or the [File]-[Open file...] menu to open it.

When RAW data is opened, the file is added to source file list.

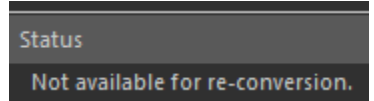
If RAW data from a camera model not supported by the SILKYPIX RAW Converter is imported, "Unsupported RAW" will be displayed in the list, and conversion may not be executed. Even if conversion can be executed, it may not produce the correct results, such as strange colors.

Please do not use RAW data from camera models not supported by this software.

For information on camera models supported by SILKYPIX RAW Converter, please refer to the ["Supported Digital Cameras"](#) on the website.

Furthermore, once RAW (DNG) data has been converted using SILKYPIX RAW Converter, it cannot be converted again.

When this file is opened, the status of the list shows "Not available for re-conversion."



[Register additional files]

To add more files to the list of registered files and register them, right-drag (hold down the right mouse button and drag) and drop the file/folder from Explorer.

A context menu will appear. Select "Append dropped files" to register additional files.

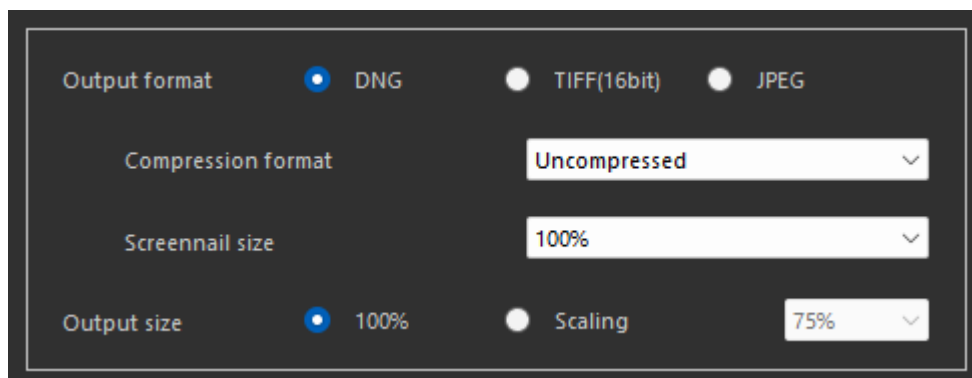
In the "Open file" dialog, additional files can be registered from the "Append" button that appears while the [Ctrl] key is held down.

3.2. Conversion settings

The right panel of the window is used to configure settings related to conversions.

3.2.1. Output format

Sets the format in which the converted RAW data will be saved.



- **Output format**

Select the format in which to save the converted RAW data.

Select from "DNG", "TIFF(16bit)" or "JPEG".

- **Compression format**

Select the image compression format.

The settings can be configured when "DNG" or "TIFF(16bit)" is selected as the Output format.

[In the case of DNG]

Output as a DNG file in LinearRAW format.

Choose from the following three compression formats:

Uncompressed	Outputs uncompressed 16-bit DNG.
Lossless compression	Performs lossless compression. The file size is smaller than that of uncompressed images, and it outputs with 16-bit gradation while preserving image quality.
Lossy compression	Lossy compression is performed. The file size is smaller than with lossless compression, but the image quality is degraded due to output in 8-bit gradation. * Note that SILKYPIX products do not support importing of DNG output with "Lossy compression". Please be careful.

[In the case of Tiff(16bit)]

Output as a 16-bit TIFF image file.

Choose from three compression formats: "Uncompressed", "LZW low compression", or "LZW high compression (LZW+Prediction compression)".

- **Screenail size**

Specifies the magnification factor for the pixel size of the screenail (preview image) to be recorded in the output image.

Select from "100%", "50%", or "No record".

If "No record" is selected, the screenail will not be recorded.

* The magnification factor specified here is the magnification factor for the Output size.

For example, if you specify 50% for Output size and 50% for Screenail size, the pixel size of the screenail will be 25% of the pixel size of the original image.

* If TIFF or JPEG is selected, the screenail will not be recorded.

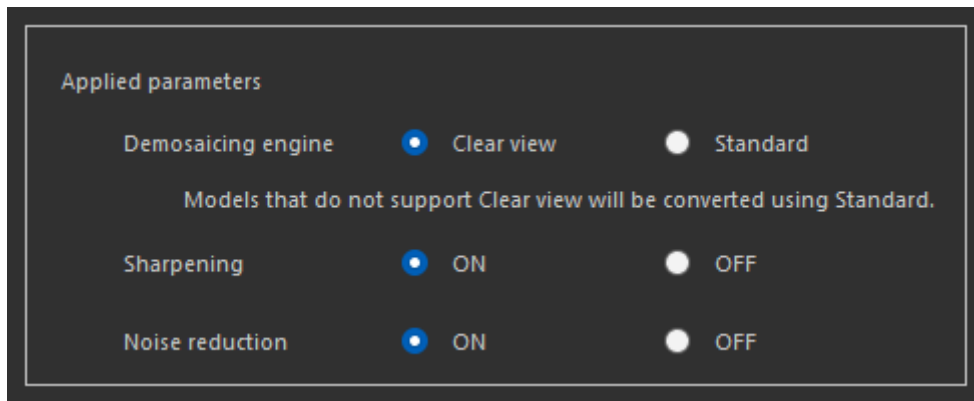
- **Output size**

Sets the magnification factor for the pixel size of the output image relative to the pixel size of the original image.

Select "100%" or select "Scaling" and specify a magnification factor (75%, 50%, 25%) from the drop-down.

3.2.2. Applied parameters

This setting configures the image processing method for RAW data.



- **Demaicing engine**

Selects the processing method for demosaicing RAW data.

Clear view	Compared to the Standard, this demosaic processing method has the feature of expressing a higher resolution of image details. This is a demosaicing process newly included in SILKYPIX Developer Studio Pro 11 / 11 series and is applied as the default value. * RAWs from camera models that do not support "Clear view" will be converted to "Standard". For details, please refer to the " Supported Digital Cameras " on the website.
Standard	This is the conventional demosaicing process of SILKYPIX.

- **Sharpening**

Select whether sharpness processing is applied or not (ON/OFF).

When "ON" is selected, sharpness equivalent to the SILKYPIX series "Natural sharp" is applied at a strength corresponding to the image.

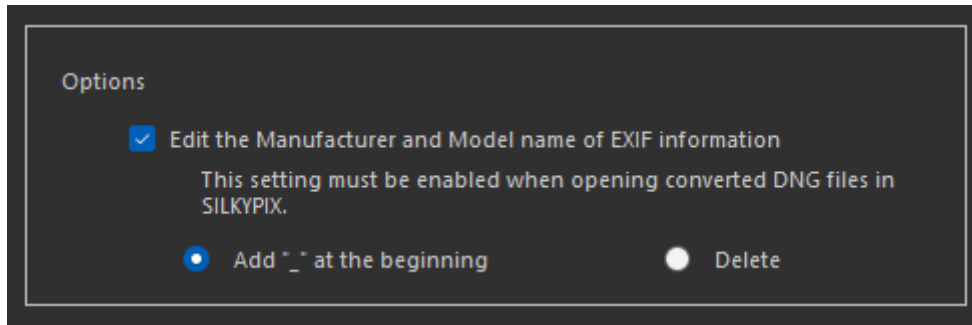
- **Noise reduction**

Selects whether noise reduction processing is applied or not (ON/OFF).

When set to "ON", noise reduction equivalent to the "Standard" setting of the SILKYPIX series is applied at a strength corresponding to the image.

3.2.3. Options

Configures settings related to the information in the output images.



- **Edit the Manufacturer and Model name of EXIF information**

Edit the manufacturer and model name of the camera as recorded in the EXIF information.

This setting must be enabled when opening and editing converted DNG files in SILKYPIX.

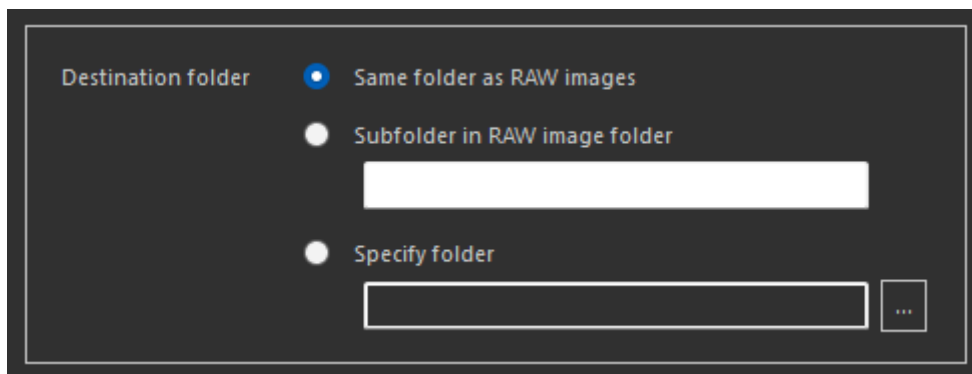
Please note that if the manufacturer and model names are recorded as they are, the DNG file may not be adjusted correctly when opened in SILKYPIX.

You can choose to completely remove the manufacturer and model names in the following settings:

Add “_” at the beginning	Insert “_” (underscore) at the beginning of the manufacturer or model name to maintain the original manufacturer or model name information.
Delete	Delete manufacturer and model names from EXIF information.

3.2.4. Destination folder

Configure settings related to the destination folder.



- **Destination folder**

Select an output folder from the following:

Same folder as RAW images	Output image files to the same folder as the RAW data.
Subfolder in RAW image folder	Creates a subfolder with the specified folder name in the same folder as the RAW data and outputs the image files.
Specify folder	Output image files to the specified folder; click [...] to specify the folder.

3.2.5. Output filename

Configure settings related to the output file name.

- **Base name**

Sets the naming rule for the base names of output files.
Select from "None", "Optional word", "Pattern", or "Number".

- **Extension**

You can configure whether to convert the file extension of the output files to uppercase or lowercase from the original file name, or leave it unchanged.

- **Optional word**

Specify any character string.

Specify the following items from the drop-down and click [<<] to insert control characters for applying the image information of the RAW data to be converted.

- Base (%N) : A part of source filename except the extension
- Focal-L (%L)
- F-Number (%F)
- Shutter-S (%T) : Shutter Speed
- Date (%Y%M%D)
- Time (%h%m%s)
- ISO (%I)

- **Pattern**

Select a prepared string from the drop-down.

- **Number**

Specify the number of digits in the serial number and the first number ("From").

- **When file names are conflicted**

Select how to handle the case where a file name with the same name as the output file name exists in the output destination.

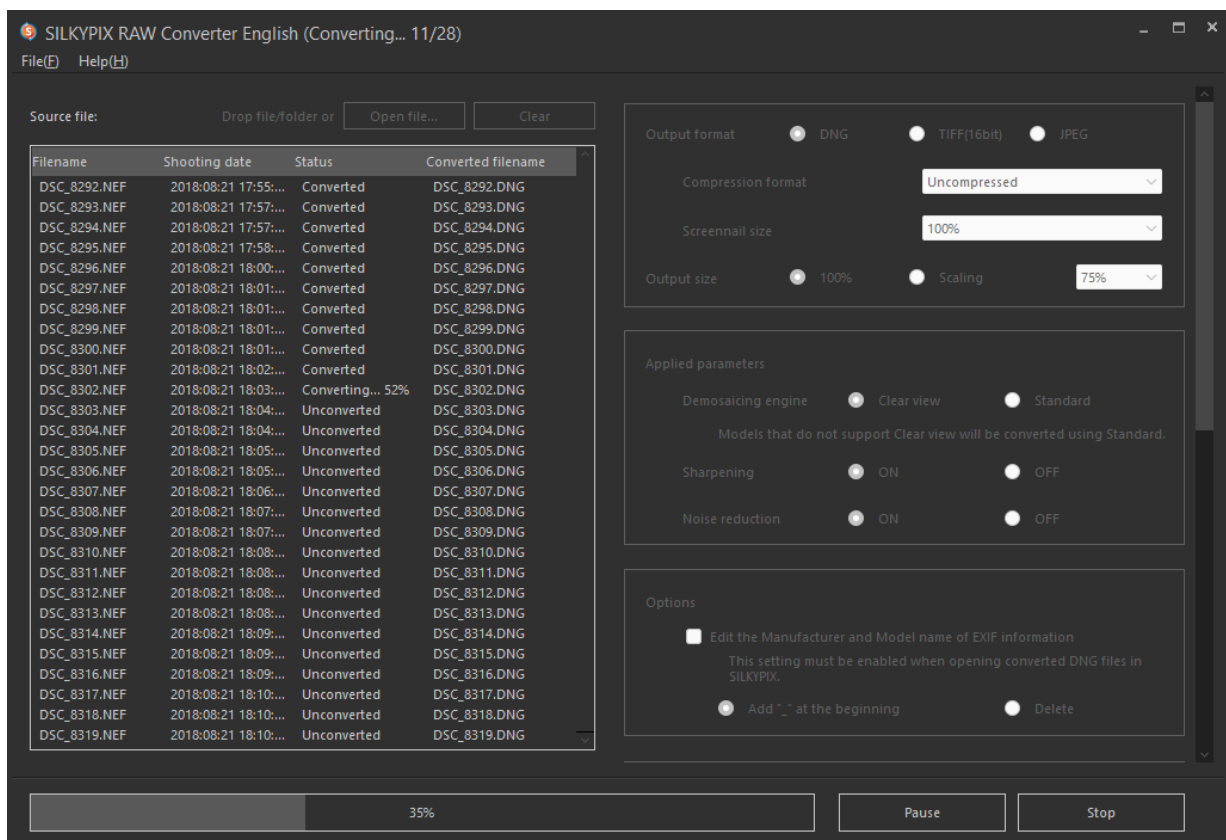
Rename automatically	Automatically generates different file names by extending the base name.
Overwrite	Overwrite an existing file.
Skip	Skip without saving.

3.2.6. Initialize

Clicking the [Initialize] button at the bottom of the settings panel restores the conversion-related settings to their default values.

3.3. Convert

Click the [Convert] button at the bottom right of the window, and the RAW data registered in the list will be converted and saved as a file.



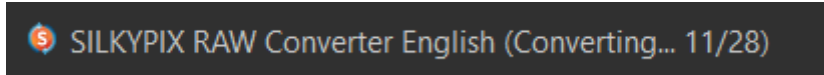
When conversion is started, the [Pause] and [Stop] buttons will appear instead of the [Convert] button.

A progress bar appears at the bottom of the window to show the overall progress.



Click the [Pause] button to temporarily stop the conversion, and the [Resume] button to resume conversion.
Click the [Stop] button to stop the conversion.

The title bar displays the overall progress in terms of the number of files during the conversion.



The status of the source file list shows the progress of each file.

An error message will be displayed if the conversion is not executed correctly.

Status	Con
Converted	D\$
Converting... 80%	D\$
Unconverted	D\$
Unconverted	D\$

The status displayed during conversion is as follows:

Converting...	Indicates that conversion is in progress. Progress is displayed in percent.
Converted	The file has been converted.
Pause	Conversion is paused.
Error (Could not open the file)	This status is displayed when a file cannot be opened, for example, when RAW data cannot be found.
Error (Failed to save the file)	This status is displayed when the converted file fails to save.
Error (Conversion failed)	This status is displayed when the conversion process fails for some reason.

4. User support

4.1. Inquiries about merchandise

Please make any inquiries you have concerning questions such as how to use "SILKYPIX RAW Converter".

In addition, we cannot answer inquiries that are not directly related to our products, such as how to handle PCs, how to handle OSs, digital cameras, and how to operate software of other companies. For inquiries about other companies' products, please contact the support desk of each company.

Furthermore, there are cases in which we cannot offer support if your problem stems from a malfunction on a device other than one for which our company offers a guarantee.

4.1.1. How to make inquiries

■ Inquire over the Internet

Use the special support form on our company's web page.

Use the [support form](#) from our support site.

* When using the support form, you must enter your registered license serial number, so please have it ready.

■ Inquiries by e-mail

Please follow the [Instructions for Making Inquiries] below and send an e-mail to the our support center.

E-mail address: silkypix_support_english@adwaa.co.jp

[Instructions for Making Inquiries]

Please include the following items when making an inquiry.

1. Your name
2. An e-mail address for replies
3. Product name: SILKYPIX RAW Converter
4. Product serial number
5. SILKYPIX RAW Converter version (example: Ver. 1.0.6.0)
6. OS

If you are user of Windows 11 / 10, please describe the Version and OS Build number.

(Example: Windows 11 Version 22H2, OS Build 22621.2283)

7. PC (manufacturer and model)
8. Processor model number
9. Processor speed (GHz)
10. Memory (GB)
11. Drive type (example: HDD / SSD)
12. Available capacity on drive (GB)
13. Digital camera (manufacturer and model)

14. Your inquiry

4.1.2. How to check serial number

Please include your serial number when making inquiries.

To check your serial number, select [Help]-[Version information] and check the dialog that appears.

5. License Agreement

[Important]

Read this license agreement carefully.

This license agreement ("Agreement") is a legal agreement between you (either an individual or a single entity) and Adwaa for software products ("Product" or "Software") of Adwaa.

Opening any packaging or physical media, installation, receiving any serialization codes or any use of this Product indicates your express understanding and acceptance of the terms in this Agreement.

Adwaa expressly prohibits you from installation or use of this Product if you do not agree to all terms of this Agreement. Adwaa reserves any and all rights not specifically granted in this Agreement.

The Product is protected by copyright laws, treaties concerning copyright, and other laws and treaties concerning right of intangible property.

You are permitted to use, and not sell, the product.

You expressly acknowledge that your rights are limited to use, and that you are expressly forbidden to rent, sell or resell the product or transfer your use rights.

[Software Product License]

Product name: SILKYPIX® RAW Converter English

1. Definitions

- (1) This Product includes the computer software, associated media, materials (documentations such as manuals), and "online" or electronic documentation.
- (2) This software has functions that are available after paying for a license.

2. Condition of Use

- (1) This agreement grants you the right to use the software based on agreeing to the users agreement.
- (2) Your rights to use this product are contingent upon your licensing the product from Adwaa or authorized Adwaa partner.
A license can be used on a maximum of three (3) computers owned by you.
You are authorized to create a number of backup copies of the product only up to the number of licenses authorized under this agreement.
- (3) Only after any required payment and being a customer in good standing will Adwaa issue you a serial number and product key (or other form of activation) to enable this software. You expressly acknowledge that you understand you will only be able to use this software after registering using activation procedures. Please refer to SILKYPIX web site (<https://support.isl.co.jp/en/license/>) for licensing procedures and other information.
- (4) You are allowed to experience all or part of the software functions without a payment for a period of time that Adwaa defines. However, you will not be able to use this software after the period defined by Adwaa has passed.

3. Communication through the Internet

If the computer on which this software is installed is connected to the Internet, there are cases in which

communications may occur with our company through the Internet in order to provide information on updating software versions or improving our company's merchandise.

When customers install this software they agree that our company may collect, save and use information concerning this software, as well as information concerning the computer system on which this software is installed.

However, information gathered from your computer is not information that would identify you personally, but rather information used only for the purpose of providing information on merchandise and services beneficial to you, as well as to improve our company's products.

4. Prohibited Matters

(1) Copyright notice

You shall not remove any copyright notice attached to all copies of this Product.

(2) Do not distribute or redistribute Product Keys

You shall not distribute the Product Key of this Product to any third party.

(3) Do Not Use Unauthorized Product Keys

You will not use a Product Key from any third party other than those provided by authorized distributors or partners of Adwaa.

(4) Do not distribute any portion of the Product

You shall not distribute any portion of the Product.

(5) Do Not Alter Product

You shall not alter all or any portion of the Product.

(6) Do not rent, lease, or sub-license the Product

You shall not rent, lease or sub-license the Product, a copy or alteration of the Product, or the Product key, to any third party.

(7) Do not reverse engineer, decompile, or disassemble the Product

You shall not reverse engineer, decompile, or disassemble the Product.

(8) Compliance with law

You shall comply with the applicable, governing laws when using the Product.

5. The Validity term of this agreement

(1) This Agreement is effective from the date of the agreement until you discontinue using the Product or terminated.

(2) Any rights granted under this Agreement are automatically terminated if you violate any portion of this Agreement. At its sole discretion, Adwaa may waive automatic termination. In the event your rights are terminated, you must destroy all copies of the product and product components. In the event your rights to use the product are terminated, you expressly agree and warrant that any applicable penalties or requirements, without limitation, are in full force under this Agreement.

6. Responsibilities of Adwaa

Adwaa provides limited technical and customer service support only for customers who are parties to this Agreement; technical support is not provided during any trial period.

You can use the Support Services in accordance with Adwaa's policy and program as written in the user's manual, online documentations or printed materials provided by Adwaa.

The additional software codes are regarded as a part of the Product, and the terms and conditions of this Agreement are applied.

The technical information of the customers provided to Adwaa as part of the support service may be used by Adwaa for commercial purposes, including product support or development. However, Adwaa shall not use them in a way in which the customer can be identified.

7. Limitation of Liability

- (1) Adwaa is not liable for any damages arising out of selection, introduction, usage and results of using this product. You assume the entire risk.
- (2) In no event will Adwaa or its suppliers be liable for any damages (including but not limited to the damages for lost of revenue, business interruption, loss of business information, and other pecuniary loss) arising out of the use or inability to use the Product and its documentation even if Adwaa has been advised of the possibility of such damages.

8. Copyright

All titles and copyrights in this Product and in any copies of this Product are owned by Adwaa. All titles and rights of intangible properties in the contents accessed by the Product are owned by its owner, and protected by the applied copyright laws and the terms of the copyright agreement. This Agreement does not provide any license agreement of these contents owned by third party. The rights not given explicitly in this Agreement are reserved by Adwaa.

9. Export Regulation

You shall not directly or indirectly export all or a portion of the licensed software without obtaining the necessary permission from the Government of Japan or the governments of the relevant countries.

10. Third Party Software

Adwaa may provide to you third party products ("Third Party Product") in addition to the Product; Any third party product is governed exclusively by its own End User License Agreement and terms and not this Agreement, including, but exclusive to, support and warranty.

(1) Support services

Third Party Product(s) documentation and components are provided as is without support from Adwaa.

(2) No warranty

Third Party Product(s) documentation and components are provided as is without any warranty, including merchantability, fitness for a particular purpose and non-infringement, regardless of whether it is oral or written information. The entire risk as to the results and performance of the Third Party Product is assumed by you.

(3) Exclusion of Liability

In no event will Adwaa be liable for any damages (including but not limited to the damages for lost revenue, business interruption, loss of business information, and other pecuniary loss) arising out of the use or inability to use the Third Party Product and its documentations, even if Adwaa has been advised of the possibility of such damages.

11. Third Party Software

This Product contains GPR-SDK, Copyright 2018 GoPro, Inc. Permission is hereby granted, free of charge, to any

person obtaining a copy of this software and associated documentation files (the "Software"), to deal in the Software without restriction, including without limitation the rights to use, copy, modify, merge, publish, distribute, sublicense, and/or sell copies of the Software, and to permit persons to whom the Software is furnished to do so, subject to the following conditions:

The above copyright notice and this permission notice shall be included in all copies or substantial portions of the Software.

THE SOFTWARE IS PROVIDED "AS IS", WITHOUT WARRANTY OF ANY KIND, EXPRESS OR IMPLIED, INCLUDING BUT NOT LIMITED TO THE WARRANTIES OF MERCHANTABILITY, FITNESS FOR A PARTICULAR PURPOSE AND NONINFRINGEMENT. IN NO EVENT SHALL THE AUTHORS OR COPYRIGHT HOLDERS BE LIABLE FOR ANY CLAIM, DAMAGES OR OTHER LIABILITY, WHETHER IN AN ACTION OF CONTRACT, TORT OR OTHERWISE, ARISING FROM, OUT OF OR IN CONNECTION WITH THE SOFTWARE OR THE USE OR OTHER DEALINGS IN THE SOFTWARE.

11. General

- (1) The invalidity or unenforceability of any provisions of this Agreement shall not affect the validity or enforceability of any other provision of this Agreement, which shall remain in full force and effect.
- (2) This Agreement shall be governed by laws of Japan. Any dispute arising out of or related to this Agreement shall be submitted to the jurisdiction of the Tokyo District Court in Tokyo, Japan.

Adwaa Co., Ltd., Stage Bldg. 13F, 2-7-2, Fujimi, Chiyoda-ku, Tokyo 102-0071 Japan